



Allegheny County Department of Human Services

Information for candidates for CYF Director

Structure, budget, trends and plans

Thank you for your interest in applying for Director of CYF

This deck includes information that aims to give you a better picture of CYF.

It includes:

- Structure: how this position and CYF fit within DHS
- Revenues: DHS' revenues, which shows the department's second-highest award is for children, youth, families (CYF and other offices)
- Expenses: CYF spending by category
- Trends in child welfare: Referrals, Case Acceptance, Out-of-Home care, Placements by type, Re-entries, Age at entry, Dependency petitions, Disproportionality
- Challenges in child welfare
- DHS priorities
- Needs Based Plan (CYF and other offices)

Structure

Allegheny County DHS:

- Is composed of five program offices (including CYF) and three support offices
- Employs 1,150 full-time staff
 - 540 staff work for CYF
- Contracts with 490 community providers to deliver services

Leadership team: Department of Human Services (DHS)

Allegheny County DHS Director, Erin Dalton

Program Offices

- Aging Services
Director, Shannah Tharp-Gilliam
- Behavioral Health
Director, Stuart Fisk
- Children, Youth and Families**
Interim Director, Betsy Caroff
- Community Services
Director, Abigail Horn
- Developmental Supports
Director, Brenda Bulkoski

Support Offices

- Administration
Director, Loren Ganoe
- Analytics, Technology & Planning
Director, Alex Jutca
- Equity & Engagement
Director, Jessica Ruffin

Leadership team: Office of Children, Youth and Families

Director, DHS

Erin Dalton

Director, CYF

Betsy Caroff (interim)

**Assistant Director,
Prevention**

Bruce Noel

**Assistant Director,
Practice &
Permanency**

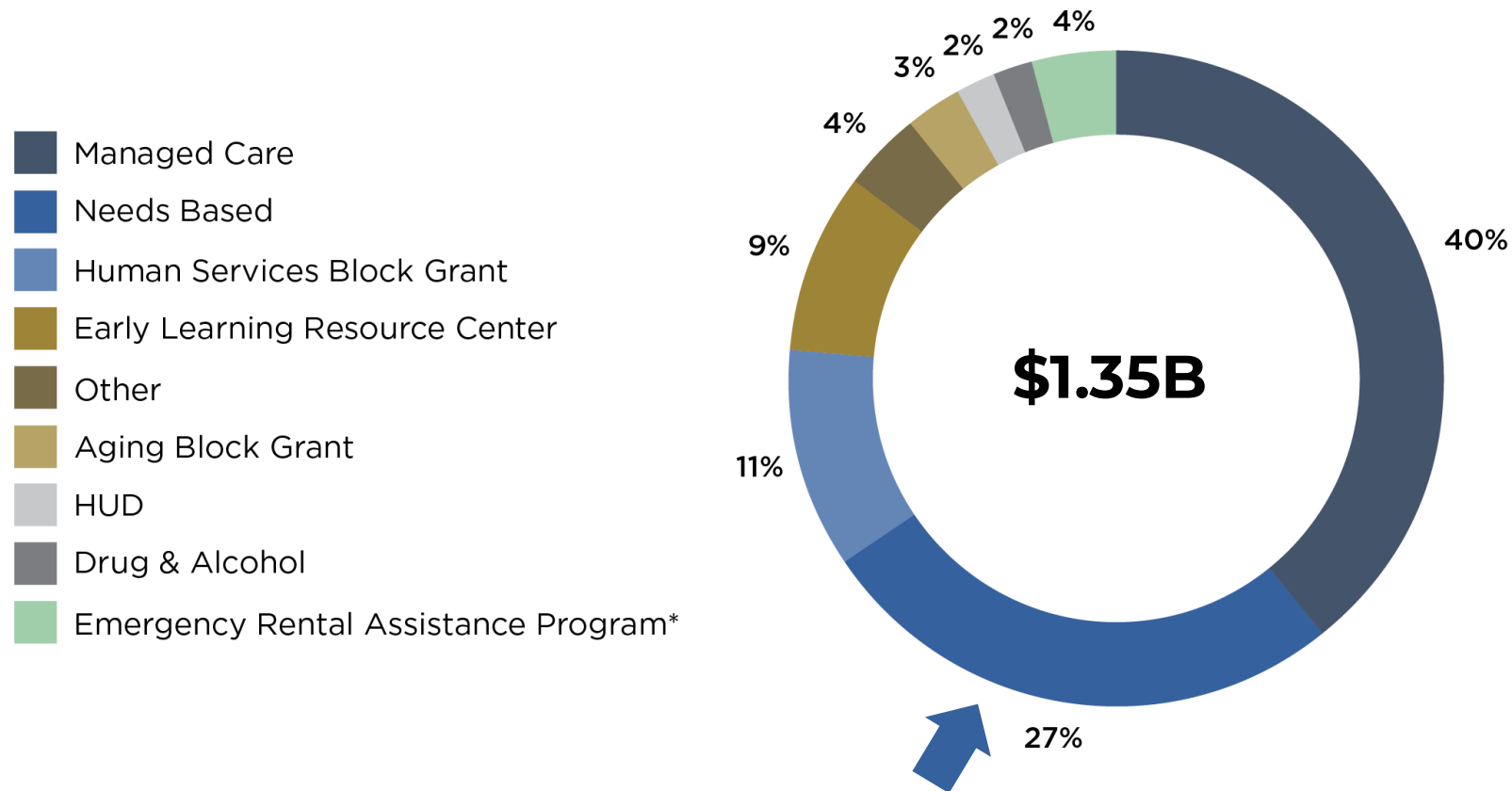
Wanda Beasley
(interim)

**Assistant Director,
Placement Stability
& Provider Relations**

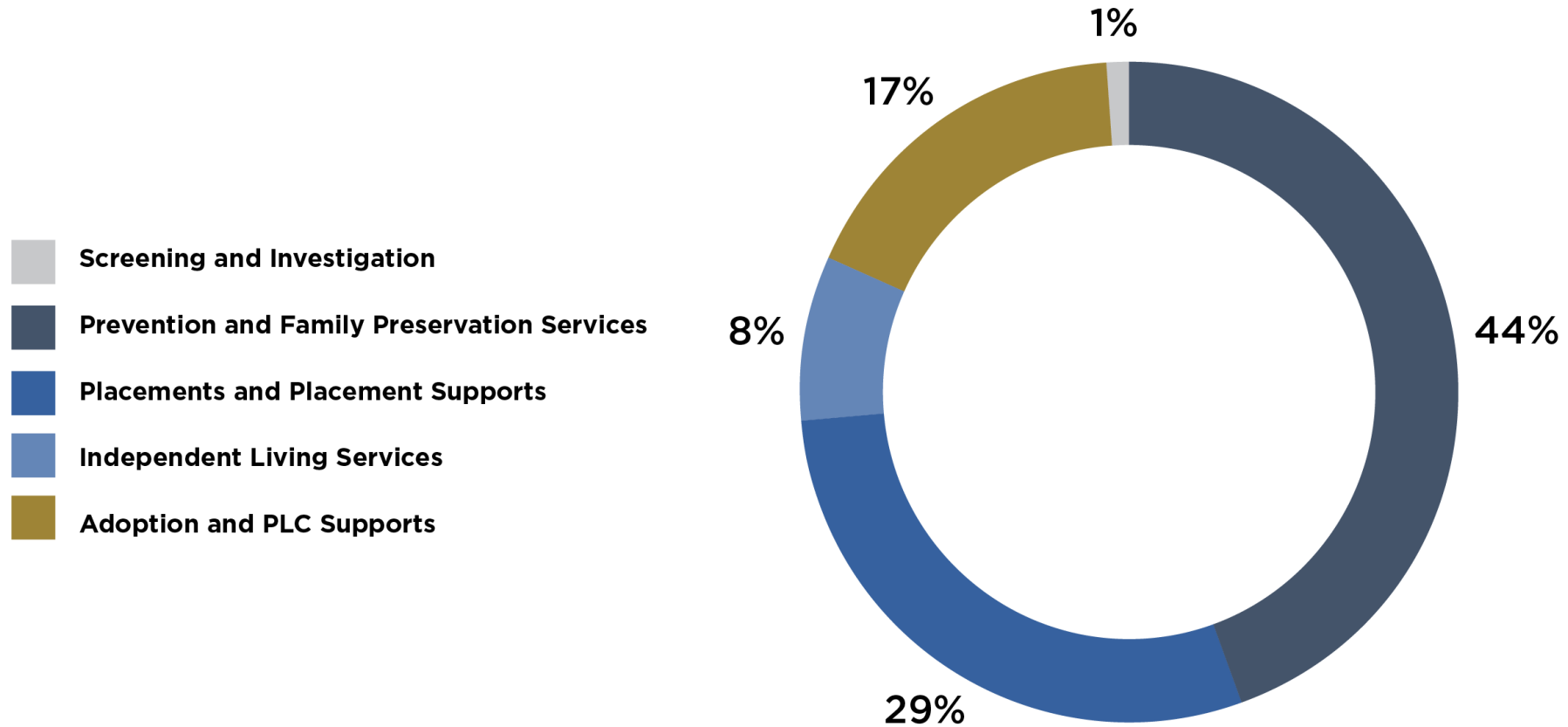
Rebecca Palatino

DHS budget and major sources/awards

2022-2023 DHS Awards

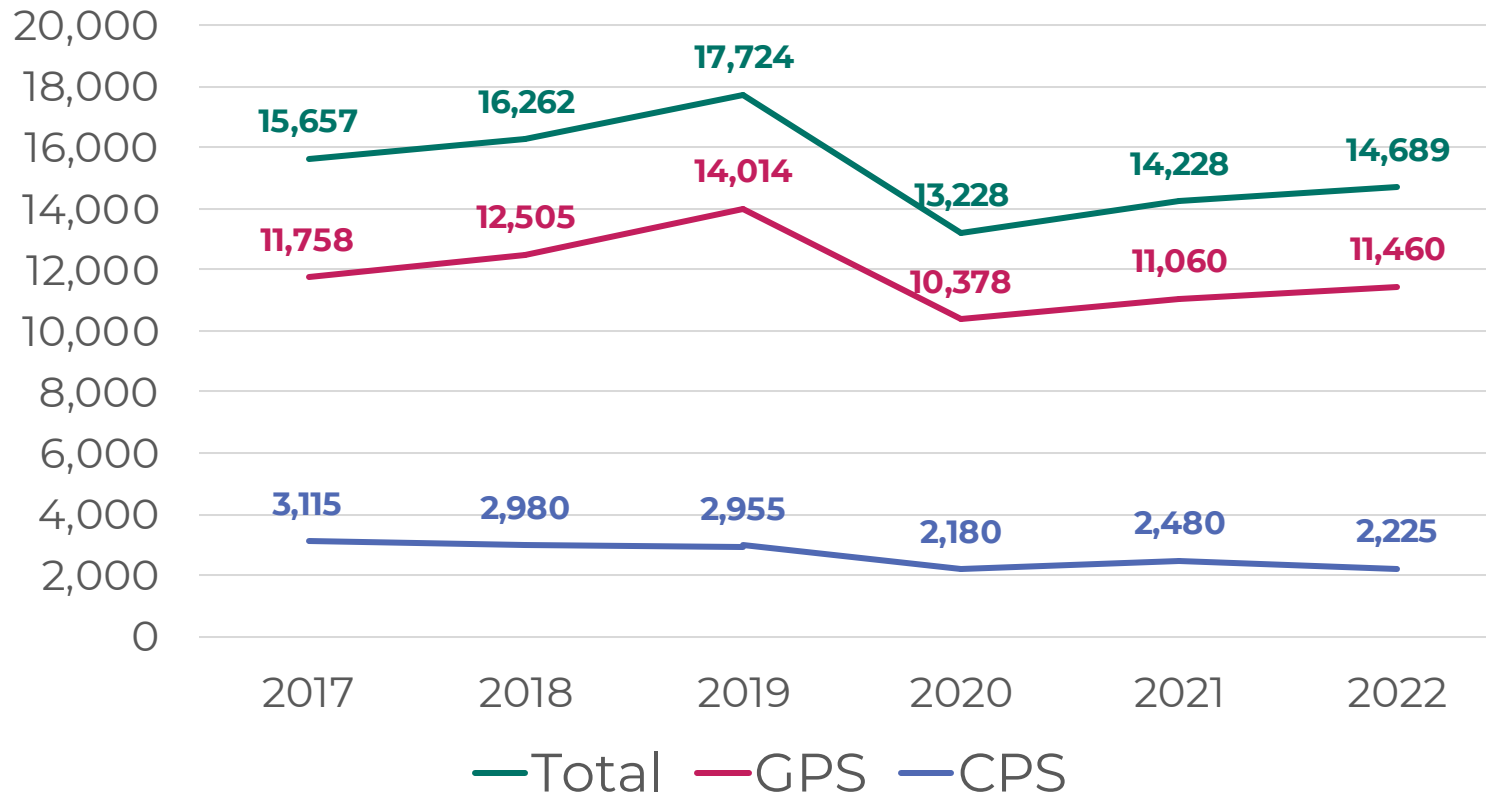


Share of expenses for major children and family services, paid by “Needs Based” award



Trends in child welfare-Referrals

Referral Count: Number of referrals by type
2017-2022



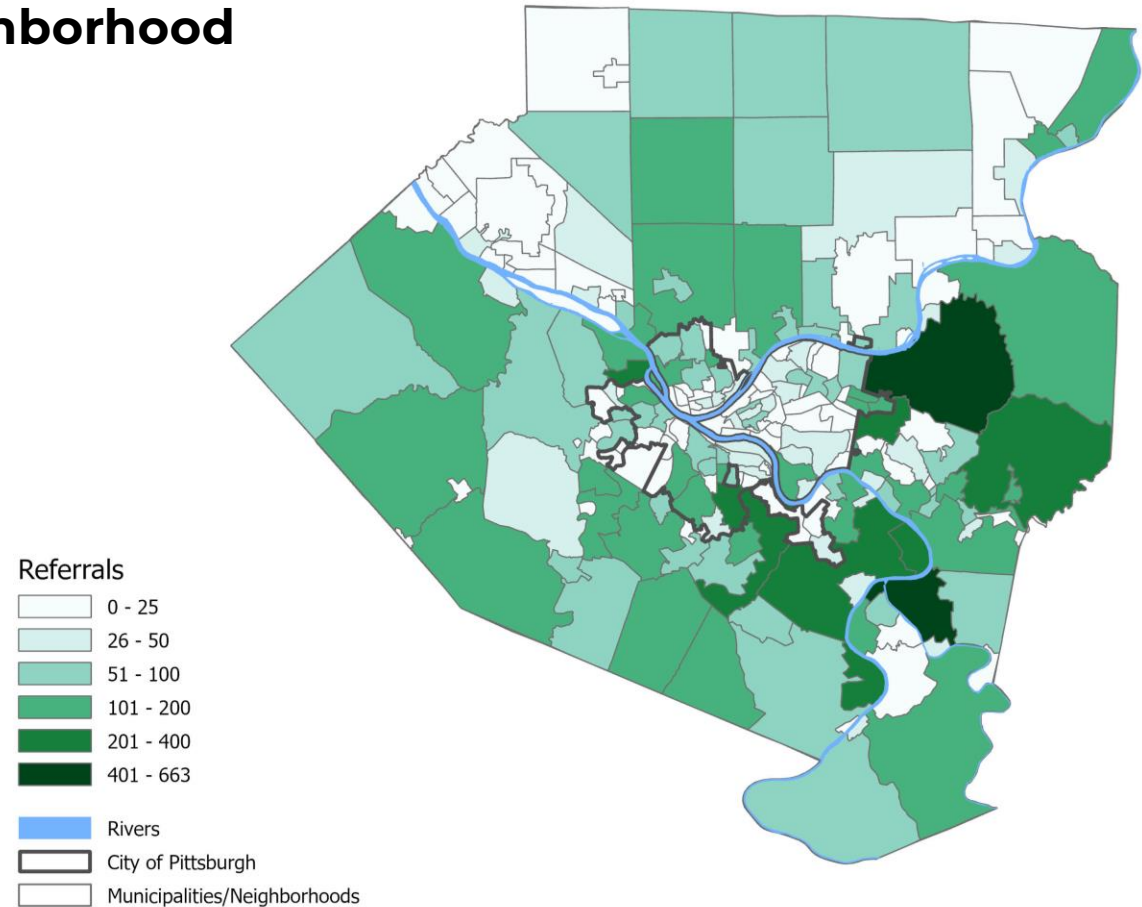
Top 10 Reporting Organizations
January 2022 – June 2023

Reporting Source	Count of referrals	% of all referrals
Pittsburgh Public Schools	789	3%
UPMC Children's Hospital	728	3%
Western Psychiatric Hospital	463	2%
Pittsburgh Police	456	2%
Magee-Womens Hospital	429	2%
Propel Schools	303	1%
Allegheny County Department of Human Services – Office of Children, Youth, and Families	232	1%
Resolve Crisis Services	226	1%
Children's Community Pediatrics	213	1%
Wesley Family Services	205	1%
Top 10 Organizations	4044	18%
Total Referrals	22766	

Trends in child welfare- Referrals

2022 Child Welfare Referrals in Allegheny County by Municipality and Pittsburgh Neighborhood

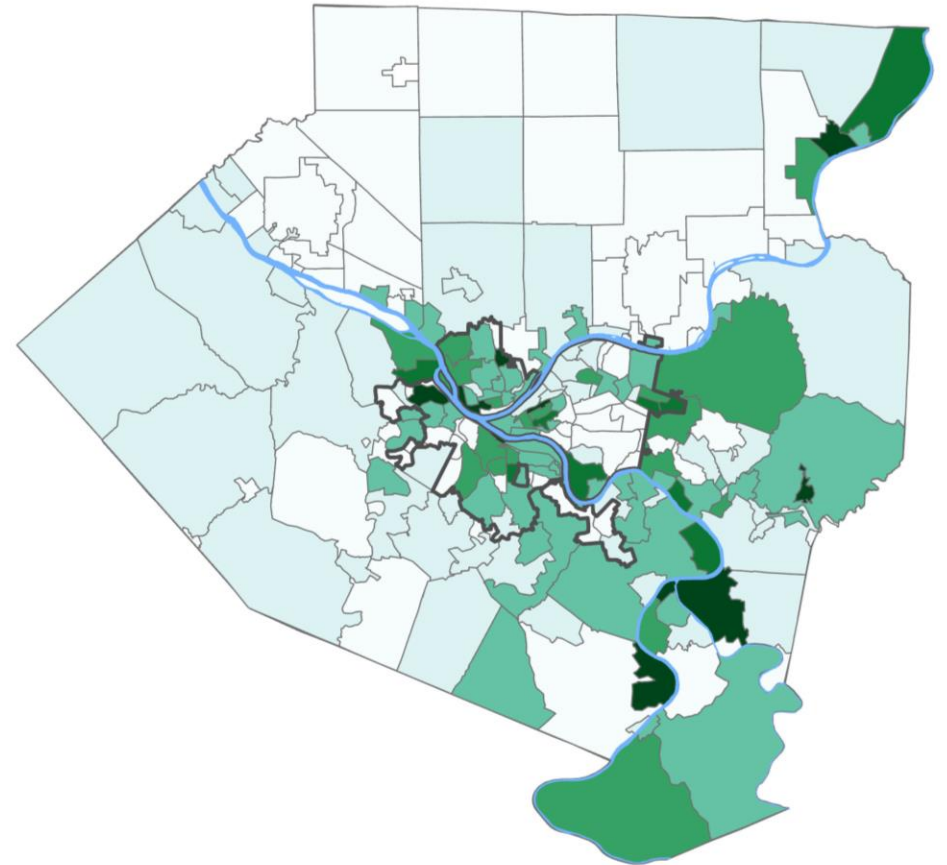
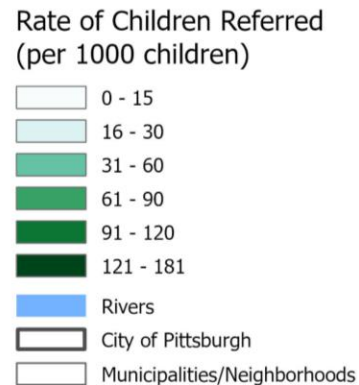
Top Referral Locations (by count)		
Name	Referrals	Rate per 1000 children
McKeesport	663	144
Penn Hills	541	61
West Mifflin	303	49
Wilkinsburg	280	73
Clairton	249	166
McKees Rocks	229	119
Carrick (Pgh)	229	53
Duquesne	222	97
Baldwin Borough	219	33
Monroeville	209	36



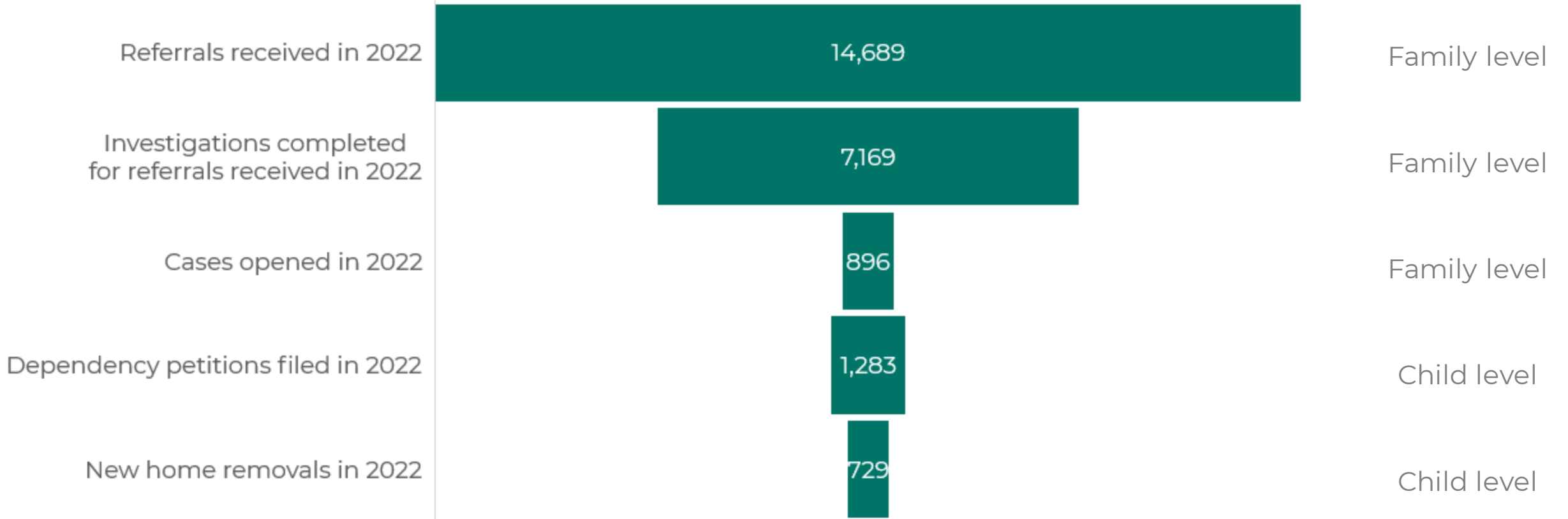
Trends in child welfare- Referral Rate

2022 Rate of Children Referred in Allegheny County by Municipality and Pittsburgh Neighborhood

Top Referral Locations (by rate)		
Name	Referrals	Rate per 1000 children
Sheraden (Pgh)	198	181
Clairton	249	166
Pitcairn	129	154
McKeesport	663	144
Tarentum	157	128
Northview Heights (Pgh)	107	126
Bedford Dwellings (Pgh)	99	122
McKees Rocks	229	119
Knoxville (Pgh)	163	117
Hazelwood (Pgh)	143	116



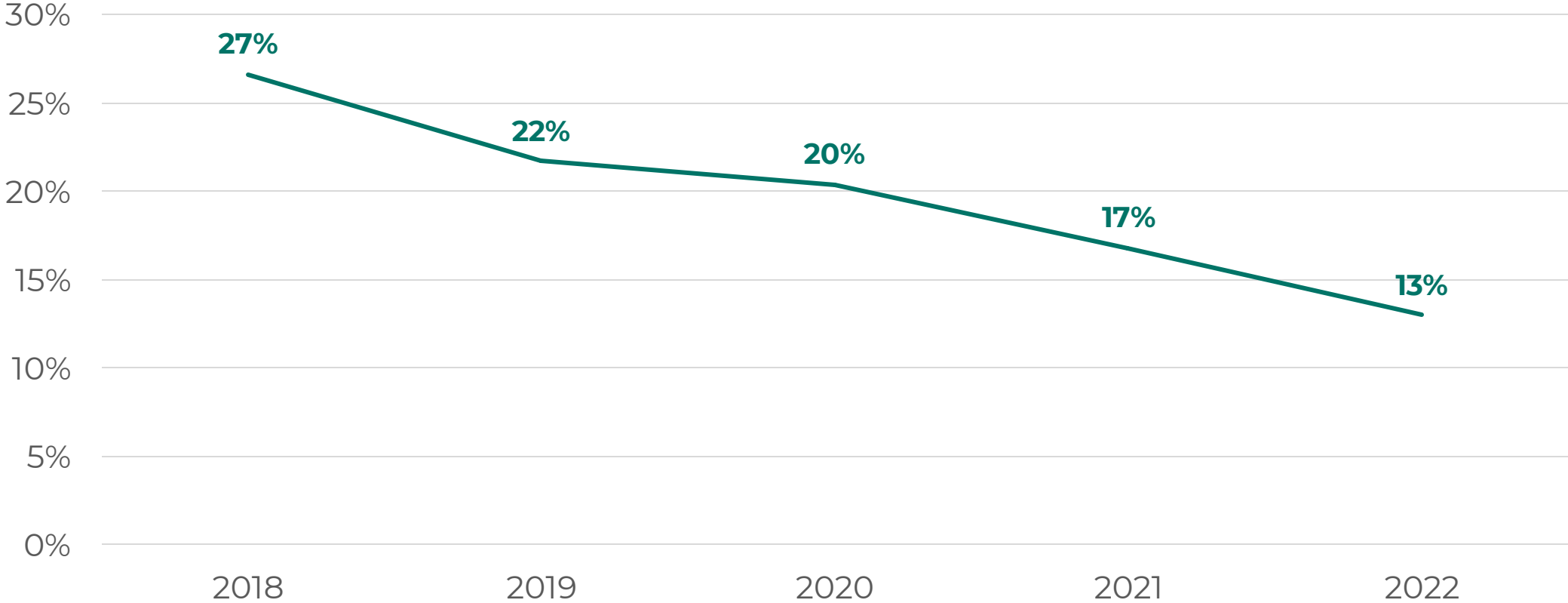
Trends in child welfare- 2022



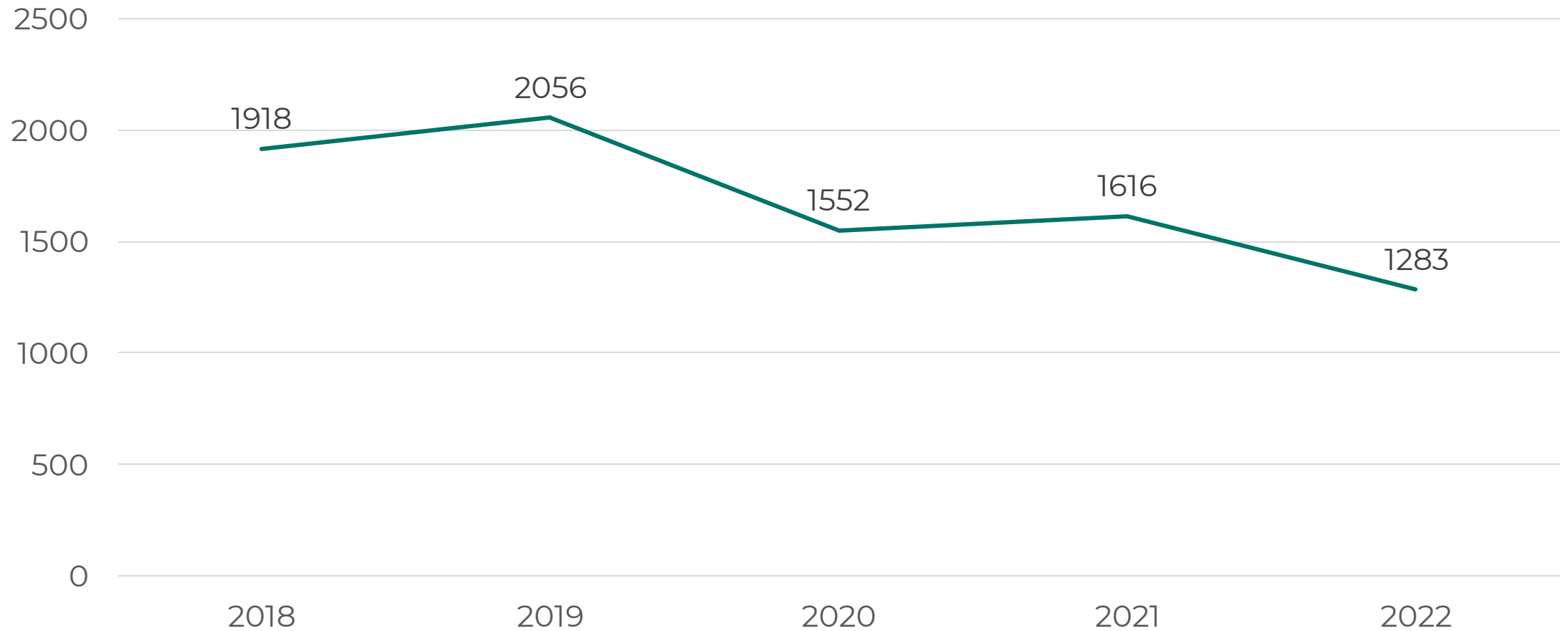
Each group shown above is not a subset of the previous group, but the per-year snapshot shows the relative size of the child welfare system as part of the process flow

Trends in child welfare-Case Acceptance

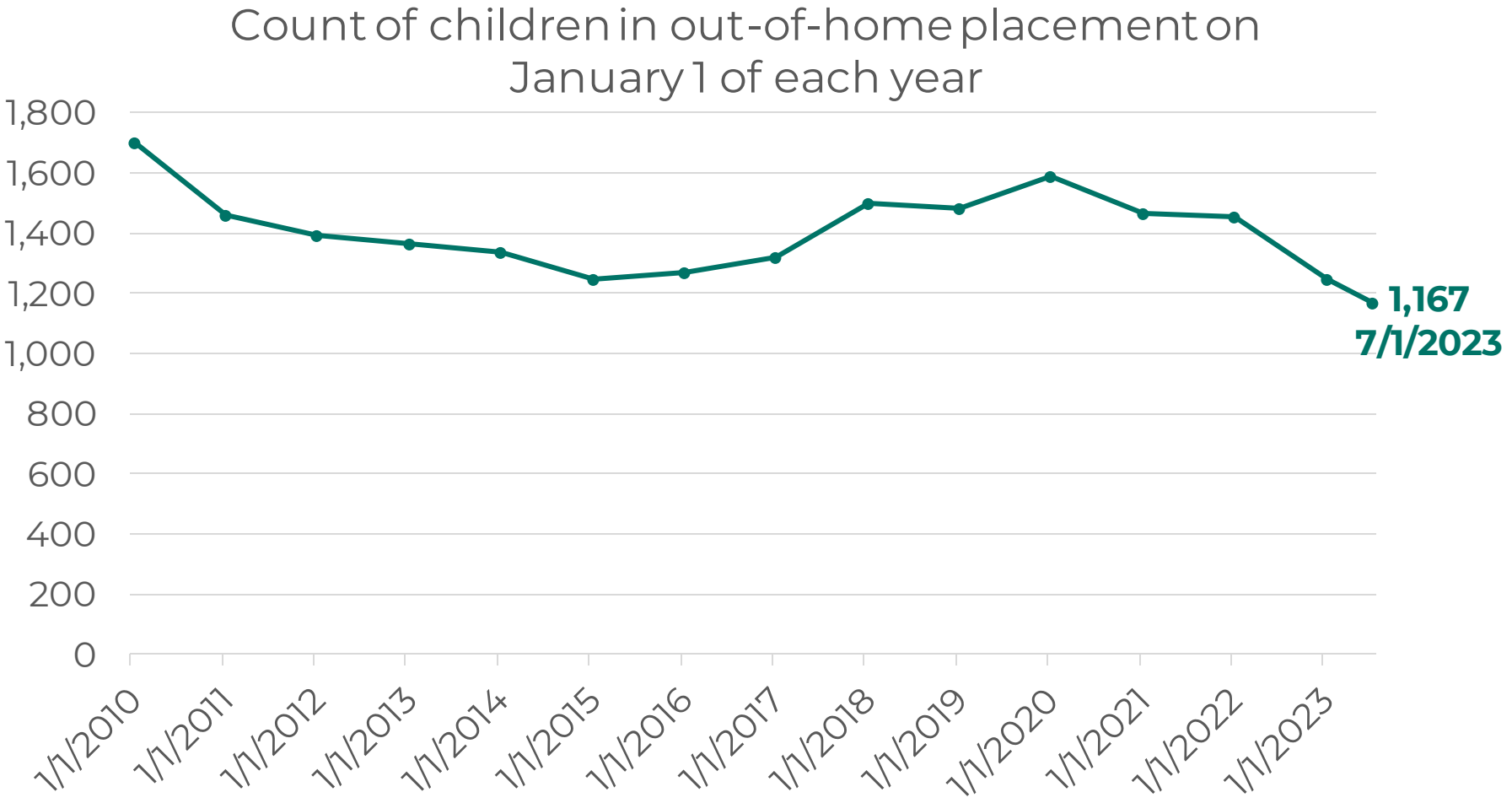
Acceptance Rates: Pct. of investigations open as a child welfare case
2018-2022



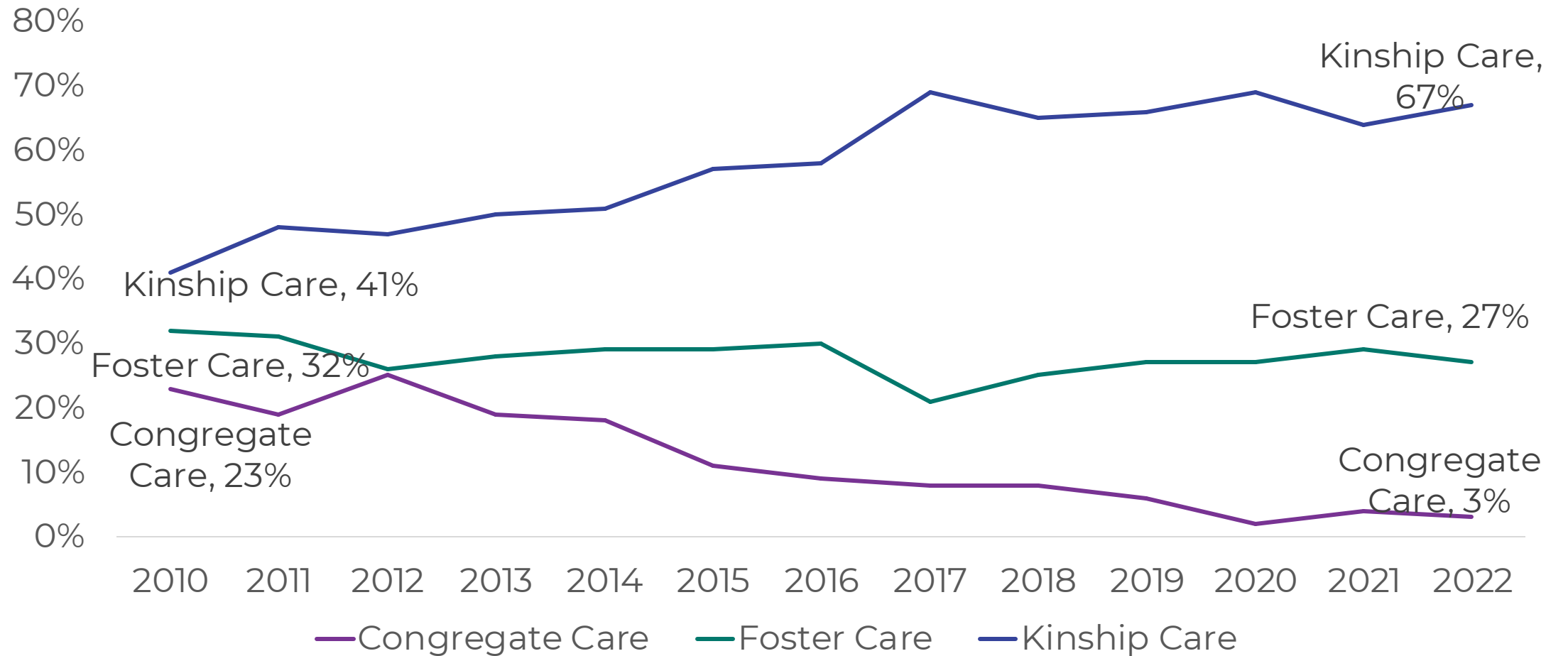
Dependency Petitions Filed



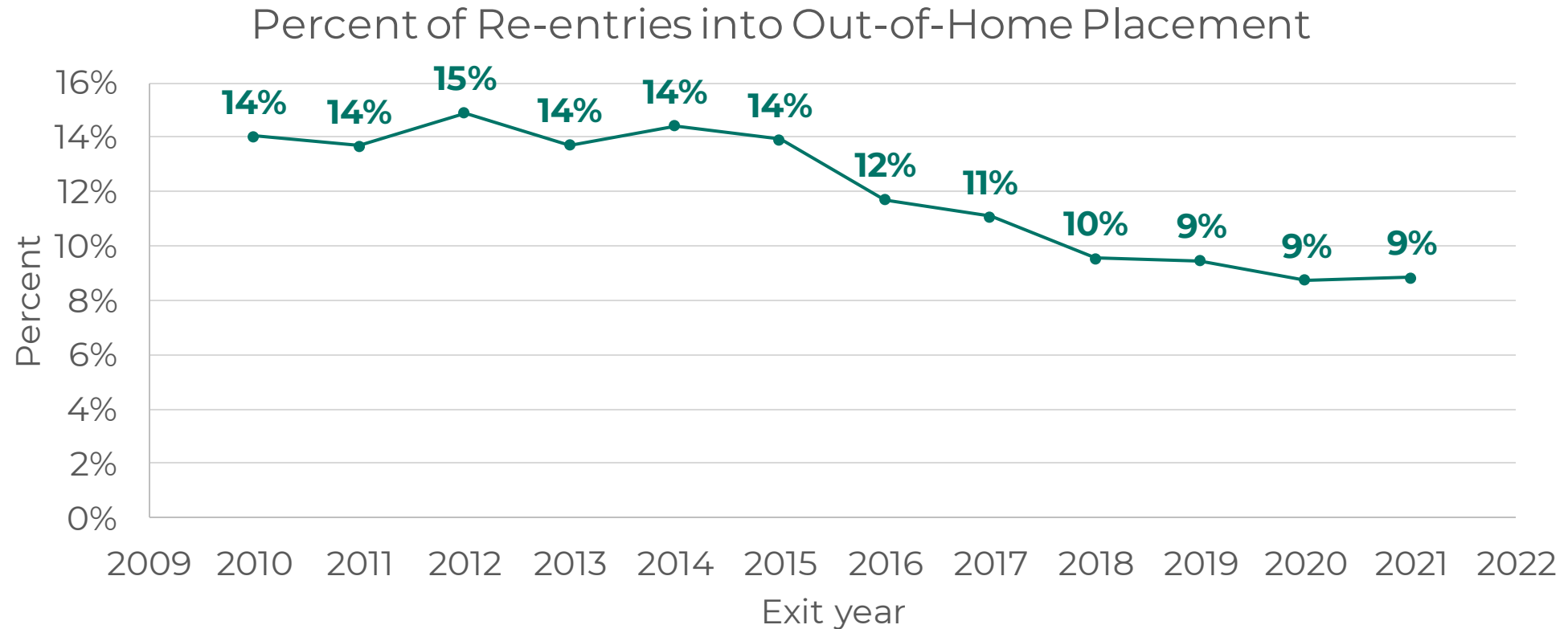
Trends in child welfare- Out of home care



Trends in child welfare- Majority Placements by Type



Trends in child welfare-Re-entries



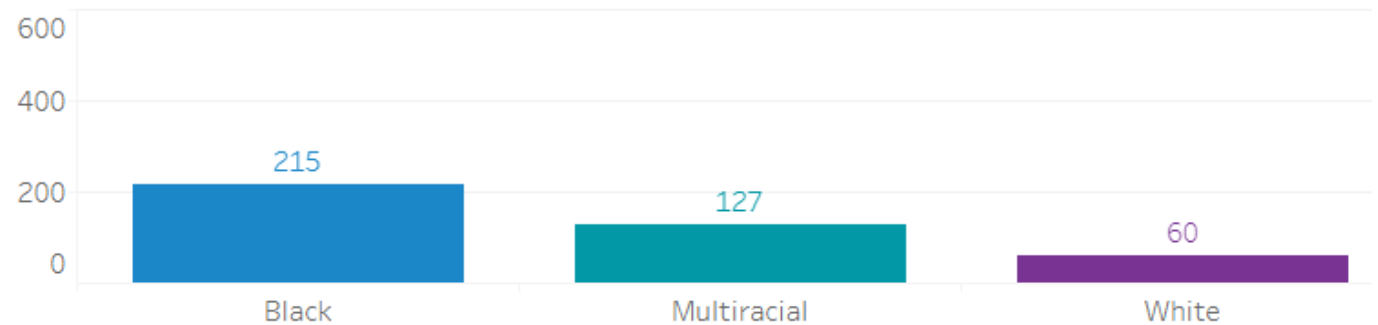
The percent of children re-entering out-of-home placement has significantly decreased since 2010. Since 2018, less than 10% of children return to out-of-home placement within 1 year of exiting.

Trends in child welfare-Disproportionality

- Racial disproportionality and disparity are widely acknowledged problems in the child welfare systems
- At every decision point, white children are underrepresented in CYF whereas black and multiracial children are overrepresented

Children Referred to Child welfare 2021

Per 1,000 Children in Allegheny County

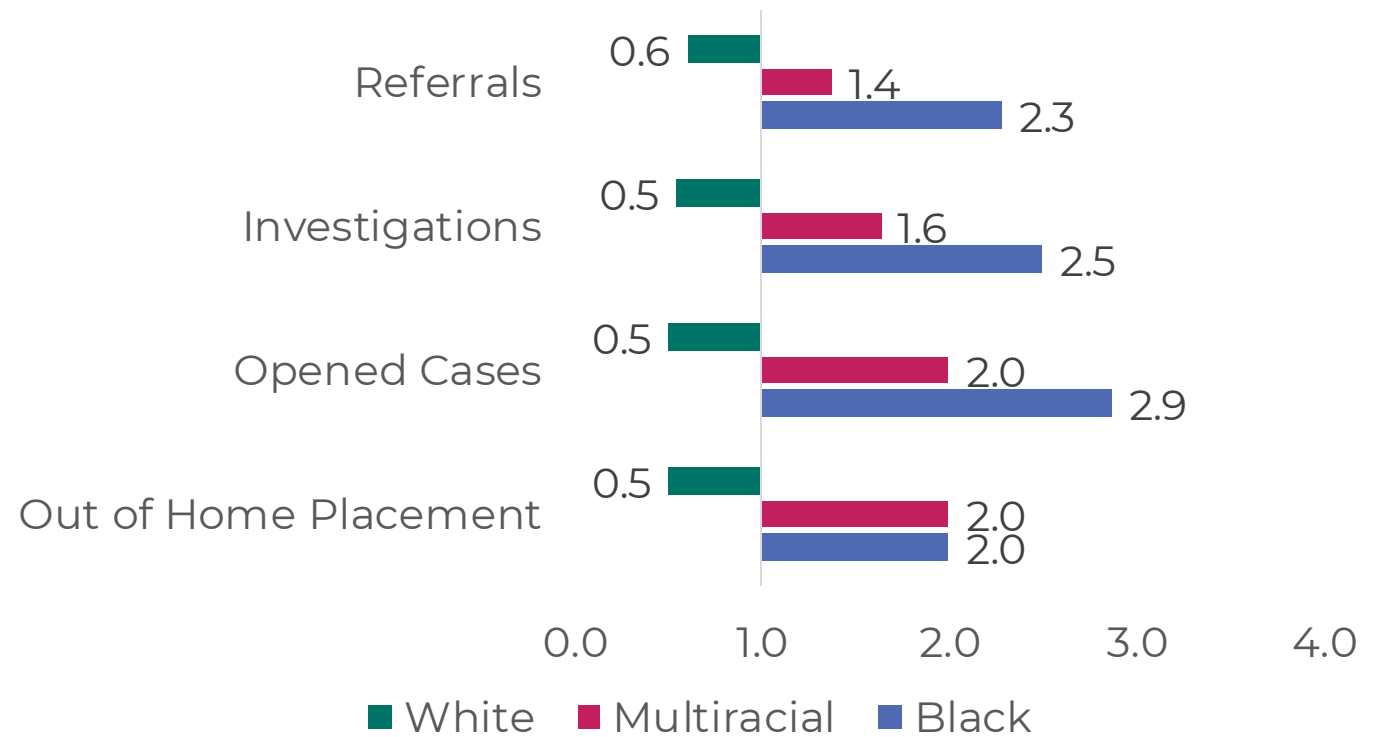


Black children of Allegheny County were more than three times more likely to be referred to child welfare in 2021 than white children

Trends in child welfare-Disproportionality

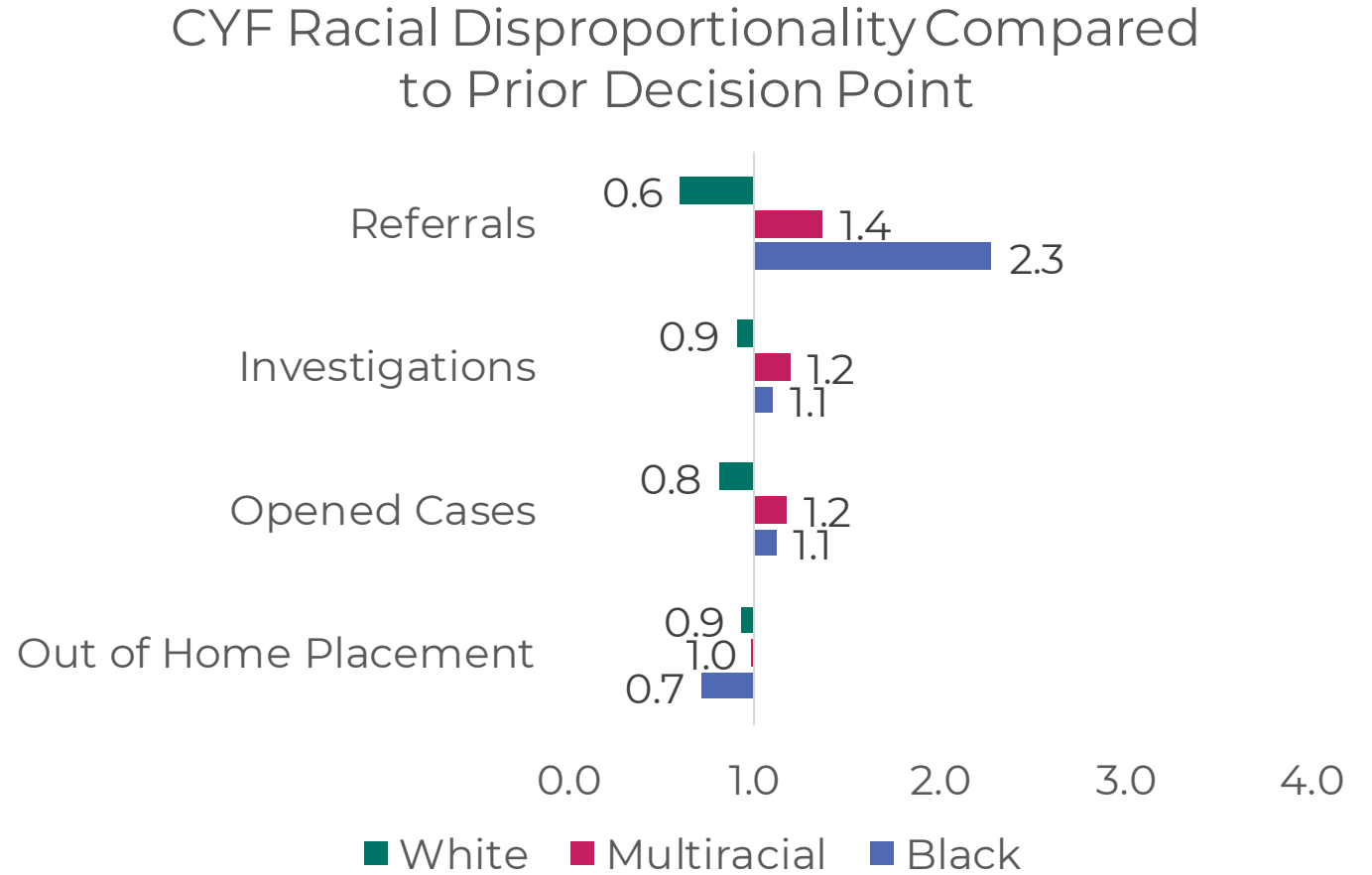
- Racial disproportionality and disparity are widely acknowledged problems in the child welfare systems.
- At every decision point, compared to the total child population of **Allegheny County**, white children are underrepresented in CYF whereas black and multiracial children are overrepresented.

CYF Racial Disproportionality Compared to Allegheny County Demographics



Trends in child welfare-Disproportionality

- Racial disproportionality and disparity are widely acknowledged problems in the child welfare systems.
- At every decision point before out of home placements, compared to the total child population of **the prior decision point**, white children are underrepresented in CYF whereas black and multiracial children are overrepresented.



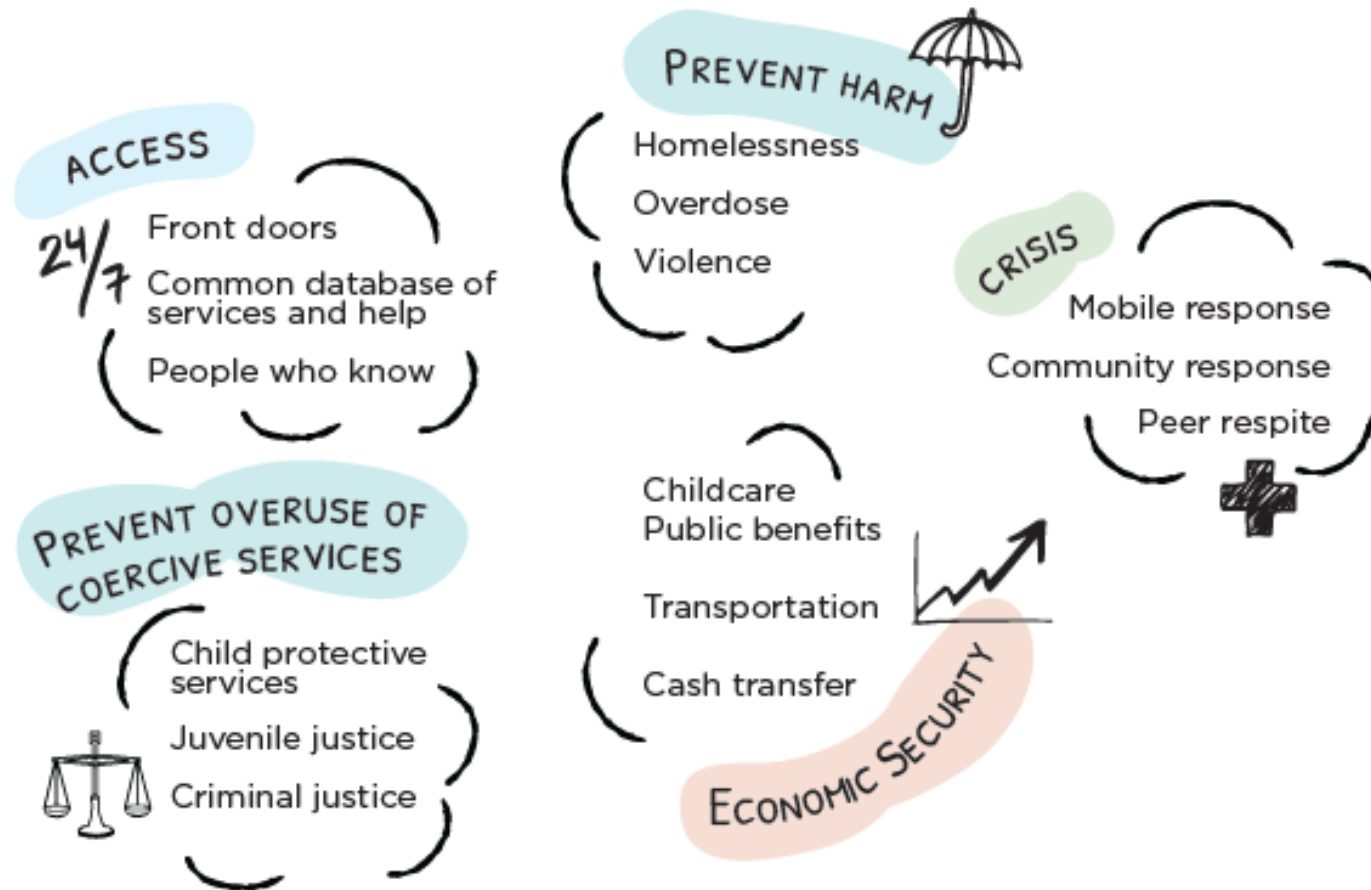
This view is taken by comparing the rate per 1,000 (prior decision point) of the target group, and dividing it by the total rate per 1,000 (prior decision point)

<https://analytics.alleghenycounty.us/2022/04/14/racial-disproportionality-in-allegheny-county-child-welfare-interactive-dashboard/>

Challenges in child welfare

- Caseworker recruitment & retention
- Expectation that child welfare system will handle all challenges as other voluntary systems are breaking down in their ability to meet family needs
- Lack of sufficient placement settings with appropriate services available to adequately serve youth with complex needs
- Increased community violence and related trauma
- Parental substance use (key driver of CYF involvement and child abuse fatalities)
- Challenges accessing quality and culturally-responsive mental health care
- Insufficient availability of concrete and economic supports for parents and caregivers
- Lack of safe, affordable housing

DHS Priorities



Needs Based Plan*

Current and Proposed Strategies include:

1. Funding concrete and economic supports, including housing, transportation, childcare, formula and diapers
2. Conducting proactive outreach to connect parents of new babies with supports they need
3. Expanding access to high-quality legal services

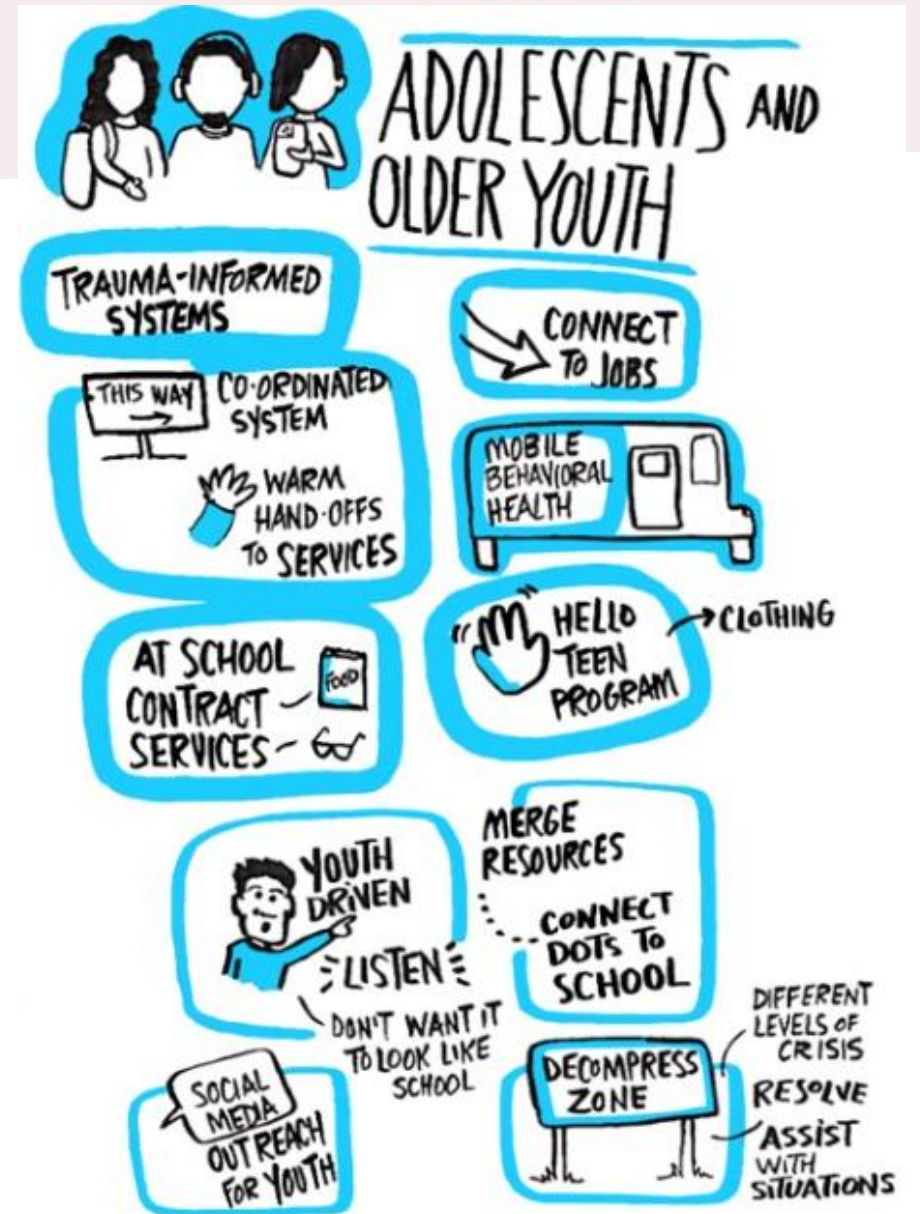
* Counties in PA submit to the state a Needs Based Plan & Budget that shows the budget for services to families for the coming year; and a proposed plan for the year following. These slides show some of the proposed strategies for Allegheny County. Note that the DHS office responsible for implementing each varies.



Needs Based Plan

Current and Proposed Strategies include:

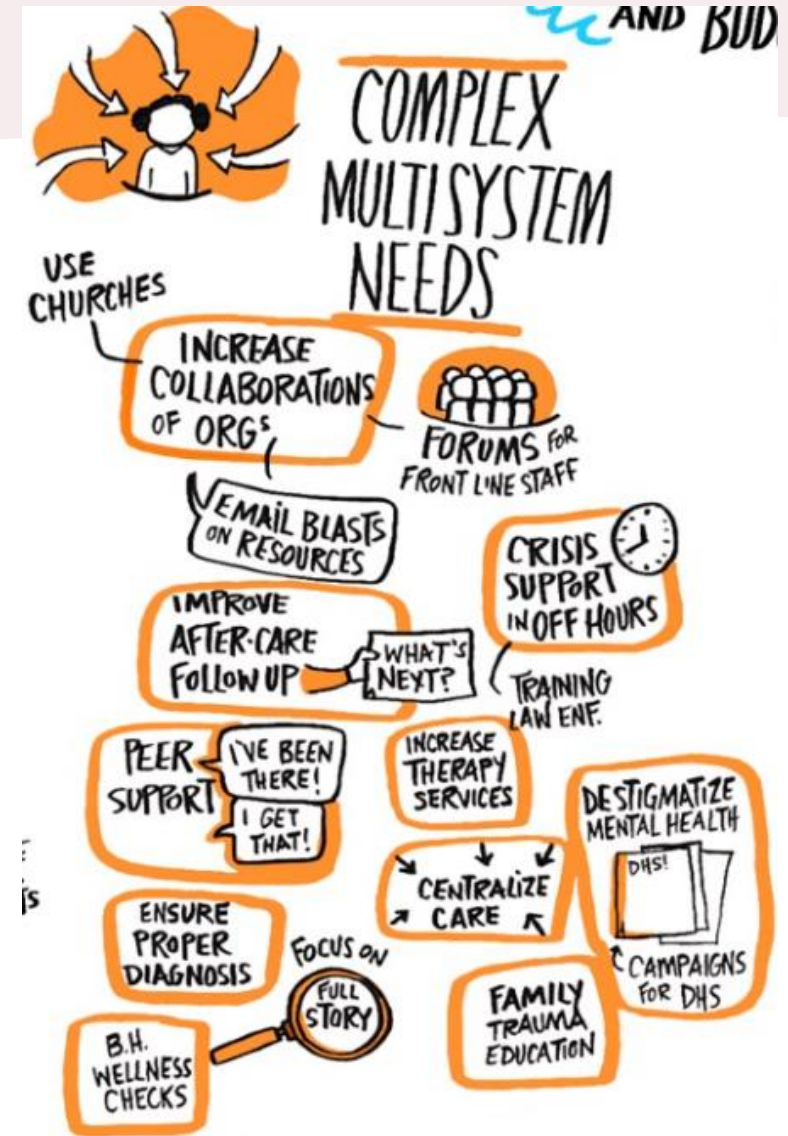
1. Expanding the number of Teen Program sites providing a safe space, opportunities for enriching activities and connections to peer and adult supports
2. Funding Caring Connections, a juvenile justice diversion program includes a 24-hour call center, referral network, and connections to community-based supportive interventions
3. Funding “informal” or non-medical supports for mental health that can be provided via help from peers, religious leaders, or other non-health professionals



Needs Based Plan

Current and Proposed Strategies include:

1. Creating new residential placement settings with on-site therapeutic supports
2. Building the capacity of family-based placement settings for youth with behavioral health needs (Therapeutic Foster Care, In-home supports)
3. Adding a new Psychiatric Residential Treatment Facility (pRTF) and Diversion and Stabilization (DAS) program (funded separately by Medicaid)



Needs Based Plan

Current and Proposed Strategies include:

1. Investing in evidence-based programs to support young people
2. Supporting community-based organizations to create and implement Community Violence Reduction Plans that include evidence-based programs like Cure Violence
3. Funding a county-wide convener to convene stakeholders, coordinate homicide reviews, and implement a hospital-based intervention program

